

# ICD-10 vs. ICD-11

## Workshop

# Neurologie

Dr. med. Marc Oliver Koch  
Neurologie Toggenburg AG, Wattwil  
Polydisziplinäre Begutachtungsstelle

# Fallbeispiel

## Traumatische Hirnverletzung

ICD-10 ?

ICD-11 ?

EFNS ?

# Fallvignette

58-jährige, gesunde Skilehrerin

Skisturz am 27.03.2019

- mehrminütige Bewusstlosigkeit (weniger 30 min.)
- kongrade und anterograde Amnesie von ca. 10 min.
- GCS 15
- keine fokalen neurologischen Defizite
- anhaltende Kopfschmerzen vom Spannungstyp seit dem Ereignis; kein Analgetikaübergebrauch; vorbestehende Migräne ohne Aura
- erhöhte Ermüdbarkeit und Konzentrationsstörungen; neuropsychologische Untersuchung noch ausstehend

Search 1c16

[?](#) [ Advanced Search ]

[Browse](#)

[Coding Tool](#)

[Special Views](#)

[Info](#)

- ▶ 03 Diseases of the blood or blood-forming organs
- ▶ 04 Diseases of the immune system
- ▶ 05 Endocrine, nutritional or metabolic diseases
- ▶ 06 Mental, behavioural or neurodevelopmental disorders
- ▶ 07 Sleep-wake disorders
- ▼ 08 Diseases of the nervous system
  - ▶ Movement disorders
  - ▶ Disorders with neurocognitive impairment as a major feature
  - ▶ Multiple sclerosis or other white matter disorders
  - ▶ Epilepsy or seizures
  - ▶ Headache disorders
  - ▶ Cerebrovascular diseases
  - ▶ Spinal cord disorders excluding trauma
  - ▶ Motor neuron diseases or related disorders
  - ▶ Disorders of nerve root, plexus or peripheral nerves
  - ▶ Diseases of neuromuscular junction or muscle
  - ▶ Cerebral palsy
  - ▶ Nutritional or toxic disorders of the nervous system
  - ▶ Disorders of cerebrospinal fluid pressure or flow
  - ▶ Disorders of autonomic nervous system
  - ▶ Human prion diseases
  - ▶ Disorders of consciousness
  - ▶ Other disorders of the nervous system
  - ▶ Postprocedural disorders of the nervous system
  - ▶ Injuries of the nervous system
  - ▶ Neoplasms of the nervous system

Foundation Id : <http://id.who.int/icd/entity/1296093776>

## 08 Diseases of the nervous system

### Description

This is a group of conditions characterized as being in or associated with the nervous system.

### Exclusions

- Endocrine, nutritional or metabolic diseases ([5A00-5D46](#))
- Complications of pregnancy, childbirth and the puerperium ([JA00-JB6Z](#))
- Certain conditions originating in the perinatal period ([KA00-KD5Z](#))
- Injury, poisoning or certain other consequences of external causes ([NA00-NF2Z](#))

### Coded Elsewhere

- Injuries of the nervous system ()
- Neoplasms of the nervous system ()
- Structural developmental anomalies of the nervous system ([LA00-LA0Z](#))
- Syndromes with central nervous system anomalies as a major feature ([LD20](#))
- Non-viral and unspecified infections of the central nervous system ([1D00-1D0Z](#))
- Symptoms, signs or clinical findings of the nervous system ([MB40-MB9Y](#))
- Paralytic symptoms ([MB50-MB5Z](#))
- Dissociative neurological symptom disorder ([6B60](#))

[Release Notes](#)

- ▼ Injuries to the head
  - ▶ NA00 Superficial injury of head
  - ▶ NA01 Open wound of head
  - ▶ NA02 Fracture of skull or facial bones
  - ▶ NA03 Dislocation or strain or sprain of joints or ligaments of head
  - ▶ NA04 Injury of cranial nerves
  - ▶ NA05 Injury of blood vessels of head
  - ▶ NA06 Injury of eye or orbit
  - ▶ NA07 Intracranial injury
  - ▶ NA08 Crushing injury of head
  - ▶ NA09 Traumatic amputation of part of head
  - ▶ NA0A Certain specified injuries of head
  - ▶ NA0B Injury of the auricle
  - ▶ NA0C Injury of middle or inner ear
  - ▶ **NA0Z Injuries to the head, unspecified**
  - ▶ NA04 Injury of cranial nerves
  - ▼ NA07 Intracranial injury
    - ▶ NA07.0 Concussion
    - ▶ NA07.1 Traumatic intracerebral haemorrhage
    - ▶ NA07.2 Traumatic cerebral oedema
    - ▶ NA07.3 Diffuse brain injury
    - ▶ NA07.4 Focal brain injury
    - ▶ NA07.5 Traumatic epidural haemorrhage
    - ▶ NA07.6 Traumatic subdural haemorrhage
    - ▶ NA07.7 Traumatic subarachnoid haemorrhage
    - ▼ NA07.8 Traumatic haemorrhage in brain tissue
      - ▶ NA07.80 Traumatic haemorrhage in

## NA07 Intracranial injury

### Parent

[Injuries to the head](#)

[Show all ancestors](#) ▾

### Description

Damage inflicted on the tissues of the brain as the direct or indirect result of an external force, with or without disruption of structural continuity.

### Coded Elsewhere

- Intracranial laceration or haemorrhage due to birth injury ([KA40.0](#))

### Postcoordination <sup>?</sup>

Add detail to **Intracranial injury**

Has pupil reaction score (use additional code, if desired .)

|      |                      |
|------|----------------------|
| XC5Y | Neither pupil reacts |
| XC16 | One pupil reacts     |
| XC5K | Both pupils react    |
| XC85 | Data not available   |

Has gcs eye score (use additional code, if desired .)

|      |   |
|------|---|
| XC87 | No eye opening even with painful or noxious stimulation |
| XC3W | One or both eyes are open spontaneously                 |
| XC3H | One or both eyes open to painful or noxious stimulation |
| XC5L | One or both eyes open to verbal stimulation             |

Search

[? \[ Advanced Search \]](#)

[Browse](#)

[Coding Tool <sup>2</sup>](#)

[Special Views](#)

[Info](#)

NA04 Injury of cranial nerves

NA07 Intracranial injury

NA07.0 Concussion

NA07.00 Incomplete loss of consciousness with amnesia

NA07.01 Incomplete loss of consciousness without amnesia

NA07.02 Loss of consciousness, short duration of less than 30 minutes

NA07.03 Loss of consciousness, short duration of 30 minutes to less than one hour

NA07.04 Loss of consciousness, short duration of one hour to less than 6 hours

NA07.05 Loss of consciousness, intermediate duration of 6 hours to less than 24 hours

NA07.06 Loss of consciousness, persisting longer than 24 hours or until discharge or latest assessment

NA07.07 Loss of consciousness, persisting until death

NA07.08 Loss of consciousness, duration unspecified or unknown due to effects of therapy

NA07.09 Loss of consciousness, duration unspecified or unknown due to lack of information

NA07.0Y Other specified concussion

## NA07.0 Concussion

### Parent

[NA07 Intracranial injury](#)

Show all

### Description

Loss or diminution of consciousness due to injury.

### Inclusions

- Comotio cerebri

### Postcoordination <sup>?</sup>

Add detail to **Concussion**

Has causing condition (code also)

Search

Has pupil reaction score (use additional code, if desired .)

|      |                      |
|------|----------------------|
| XC5Y | Neither pupil reacts |
| XC16 | One pupil reacts     |
| XC5K | Both pupils react    |
| XC85 | Data not available   |

Has gcs eye score (use additional code, if desired .)

|      |   |
|------|---|
| XC87 | No eye opening even with painful or noxious stimulation |
| XC3W | One or both eyes are open spontaneously                 |

## **KLINIK**

Skisturz mit Mehr minütiger Bewusstlosigkeit kommen grader und antegrader Amnesie von ca. 10 Minuten am 27.3.2019. Anhaltende Kopfschmerzen und MRI des Schädels am 15.5.2019. Hier multiple Blutungsresiduen.

## **FRAGESTELLUNG**

Genese der stattgehabten Blutungen?

## **BEFUND**

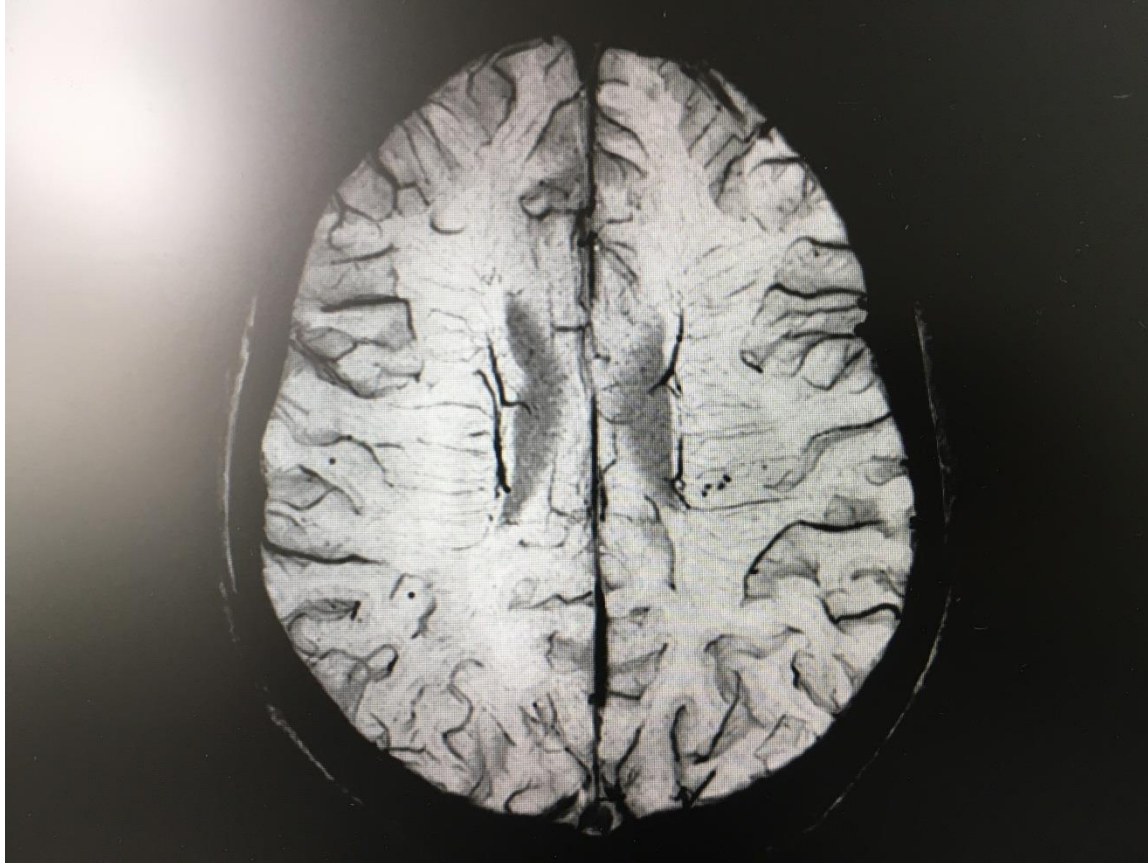
Im auswärts durchgeführten MRT des Schädels (MRI Am Bahnhof) vom 15.5.2019 finden sich **multiple intrazerebrale Blutungsresiduen, die grössten rechts frontal und im Gyrus temporalis superior links jeweils juxtakortikal gelegen. In der für Blutungen sehr sensitiven SWI-Sequenz lassen sich darüber hinaus im Marklager rechts parietal und im Centrum semiovale links > rechts multiple stippchenförmige Suszeptibilität sartefakte, die Mikroblutungen entsprechen, nachweisen.** Ansonsten unauffällige Darstellung des Marklagers und des kortikalen Rindenbandes, das Hirnwindungsrelief stellt sich unauffällig dar. Regelrechte Darstellung auch der Mittellinienstrukturen. Hirnstamm und Kleinhirn unauffällig. Altersentsprechende Weite der orthotop gelegenen inneren und äusseren Liquorräume.

## **Beurteilung**

Die Lokalisation und Morphologie der nachweisbaren **Blutungsresiduen** sind typisch für **posttraumatische intraaxiale Scherverletzungen (Akzlerations-/Dezelerationstrauma)**. Ansonsten zeigt sich ein völlig regelrechter, altersentsprechender Hirnbefund, insbesondere kein Hinweis auf anderweitige mit den Mikroblutungen in Verbindung zu bringende Pathologien.

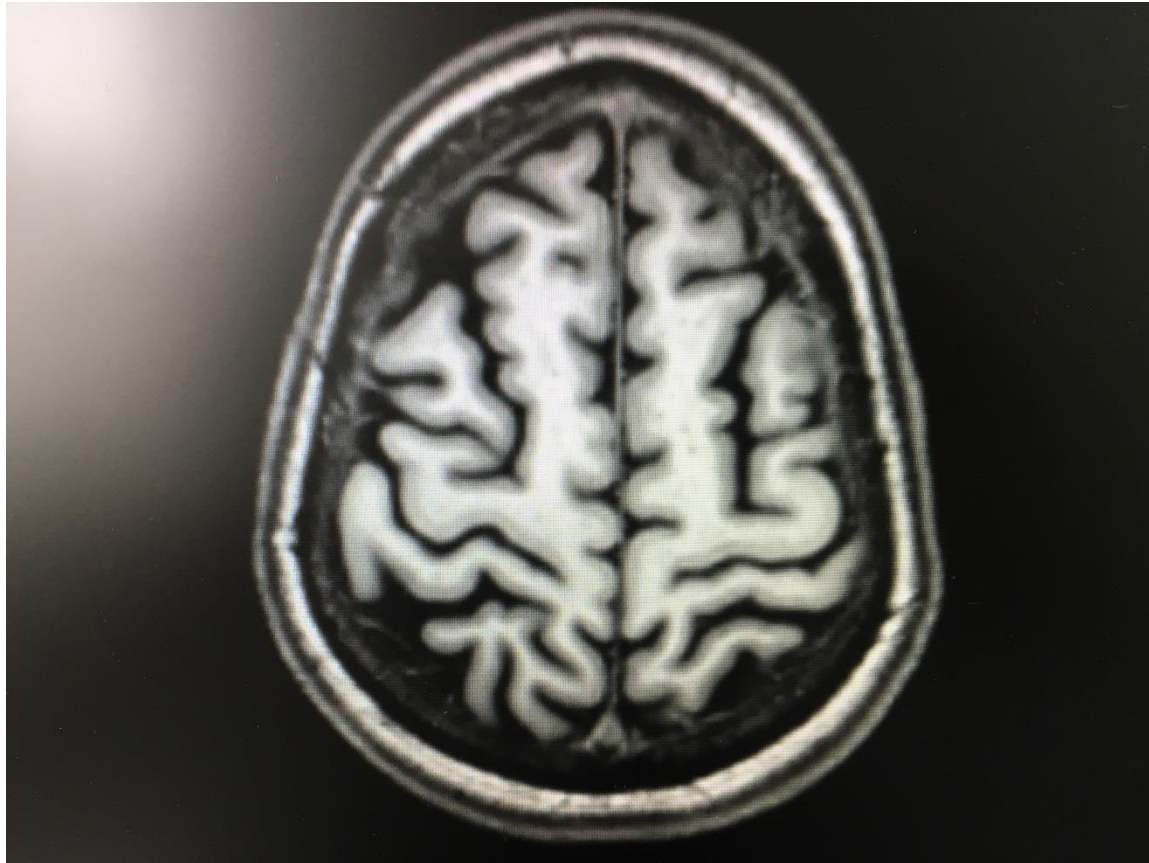
Freundliche Grüsse





## Hämosiderinsensitive SWI-Sequenzen transversal





## T1-Sequenzen transversal

Search 1c16

[ Advanced Search ]

Browse

Coding Tool

Special Views

Info

- NA04 Injury of cranial nerves
- NA07 Intracranial injury
  - NA07.0 Concussion
  - NA07.1 Traumatic intracerebral haemorrhage**
  - NA07.2 Traumatic cerebral oedema
  - NA07.3 Diffuse brain injury
  - NA07.4 Focal brain injury
  - NA07.5 Traumatic epidural haemorrhage
  - NA07.6 Traumatic subdural haemorrhage
  - NA07.7 Traumatic subarachnoid haemorrhage
  - NA07.8 Traumatic haemorrhage in brain tissue
    - NA07.80 Traumatic haemorrhage in cerebrum white matter
    - NA07.81 Traumatic haemorrhage in thalamus or basal ganglia
    - NA07.82 Traumatic haemorrhage in cerebellum
    - NA07.83 Traumatic haemorrhage in brainstem
    - NA07.84 Traumatic haemorrhage in

## NA07.1 Traumatic intracerebral haemorrhage

### Parent

NA07 Intracranial injury

Show all ancestors

### Inclusions

- traumatic intracerebral haematoma

### Postcoordination ?


Add detail to **Traumatic intracerebral haemorrhage**

Duration of coma (use additional code, if desired .)

- NA07.00 Incomplete loss of consciousness with amnesia
- NA07.01 Incomplete loss of consciousness without amnesia
- NA07.02 Loss of consciousness, short duration of less than 30 minutes
- NA07.03 Loss of consciousness, short duration of 30 minutes to less than one hour

| ICD-10   | ICD-11  | EFNS  |
|--|---|---|
| <p><b><u>Rein aufgrund der Klinik:</u></b></p> <p><b>S06.0 Gehirnerschütterung</b><br/>Commotio cerebri<br/><b>S06.70 Bewusstlosigkeit bei Schädel-Hirn-Trauma</b> weniger als 30 Minuten</p>  | <p><b><u>Rein aufgrund der Klinik:</u></b></p> <p><b>22 Injury</b>, poisoning or certain other consequences of external causes <b>Injuries to the head</b><br/>bzw. Injuries of the nervous system<br/><b>NA07 Intracranial injury</b><br/><b>NA07.0 Concussion</b><br/>NA07.02 Loss of consciousness, short duration of less than 30 minutes<br/><b>NA07.0&amp;NA07.02</b></p> | <p><b><u>Rein aufgrund der Klinik:</u></b></p> <p><b>Traumatic brain injury</b><br/><b>Kategorie 1:</b><br/>GCS=15,<br/>Bewusstseinsverlust weniger als 30 min.,<br/>posttraumatische Amnesie weniger als 1 Std.,<br/>keine zusätzlichen Risikofaktoren</p> |
| <p><b><u>Unter Berücksichtigung der Bildgebung:</u></b></p> <p>S06.2- Diffuse Hirnverletzung<br/><b>S06.23 Multiple intrazerebrale Blutungen</b><br/><b>S06.70 Bewusstlosigkeit bei Schädel-Hirn-Trauma</b> weniger als 30 Minuten</p> | <p><b><u>Unter Berücksichtigung der Bildgebung:</u></b></p> <p>Injuries of the nervous system<br/>NA07 Intracranial injury<br/>NA07.1 <b>Traumatic intracerebral haemorrhage</b><br/>NA07.02 Loss of consciousness, short duration of less than 30 minutes<br/><b>NA07.1&amp;NA07.02</b></p> <p><b><u>Einschränkung: Amnesie nicht korrekt mitcodierbar!</u></b></p>            |   |

Search



 [ Advanced Search ]

[Browse](#)

[Coding Tool !\[\]\(e78f798d4ea5c530c9db49e7d26e6b95\_img.jpg\)](#)

[Special Views](#)

[Info](#)

- ▶ Disorders with neurocognitive impairment as a major feature  
- ▶ Multiple sclerosis or other white matter disorders
- ▶ Epilepsy or seizures
- ▶ Headache disorders
  - ▶ 8A80 Migraine
  - ▶ 8A81 Tension-type headache
  - 8A82 Trigeminal autonomic cephalalgias
  - 8A83 Other primary headache disorder
  - ▶ 8A84 Secondary headache
    - 8A84.0 Acute headache attributed to traumatic injury to the head
    - ▶ 8A84.1 Persistent headache attributed to traumatic injury to the head
    - 8A84.Y Other specified secondary headache
    - 8A84.Z Secondary headache, unspecified
  - ▶ 8A85 Painful cranial neuropathies or other facial pains
  - 8A8Y Other specified headache disorders
  - 8A8Z Headache disorders, unspecified

Foundation Id : <http://id.who.int/icd/entity/588039752>

## **8A84.1 Persistent headache attributed to traumatic injury to the**

### **Parent**

[8A84 Secondary headache](#)

[Show all ancestors](#)

### **Description**

Headache of greater than three months' duration caused by traumatic injury to the head.

Search

[? \[Advanced Search\]](#)

[Browse](#)

[Coding Tool](#)

[Special Views](#)

[Info](#)

- ▶ 05 Endocrine, nutritional or metabolic diseases
- ▶ 06 Mental, behavioural or neurodevelopmental disorders
- ▶ 07 Sleep-wake disorders
- ▼ 08 Diseases of the nervous system
  - ▶ Movement disorders
  - ▶ Disorders with neurocognitive impairment as a major feature
  - ▶ Multiple sclerosis or other white matter disorders
  - ▶ Epilepsy or seizures
  - ▼ Headache disorders
    - ▼ 8A80 Migraine
      - ▶ **8A80.0 Migraine without aura**
      - ▶ 8A80.1 Migraine with aura
      - ▶ 8A80.2 Chronic migraine
      - ▶ 8A80.3 Complications related to migraine
      - ▶ 8A80.4 Cyclic vomiting syndrome
      - ▶ 8A80.Y Other specified migraine
      - ▶ 8A80.Z Migraine, unspecified

Foundation Id : <http://id.who.int/icd/entity/2048783472>

## 8A80.0 Migraine without aura

### Parent

[8A80 Migraine](#)

[Show all ancestors](#)

### Description

Recurrent headache disorder manifesting in attacks lasting 4–72 hours. The duration of attacks may be shorter in children. Typical characteristics of the headache are unilateral location, pulsating quality, moderate or severe intensity, aggravation by routine physical activity and headache is associated with nausea and/or photophobia and phonophobia.

| ICD-10  | ICD-11  | ICHD-3   |
|---|---|--|
| <p><b>Chronischer posttraumatischer Kopfschmerz G44.3</b></p> | <p>Headache disorders Kapitel 8</p> <p>Secondary headache 8A84</p> <p><b>Persistend headache attributed to Traumatic injury to the head 8A84.1</b></p> <p><u>Versicherungsmedizinisches Problem:</u><br/> <b>Zeitpunkt des Beginns des vorausgegangen <u>akuten</u> posttraumatischen Kopfschmerzes 8A84.0 in den ICD-11-Kriterien <u>nicht</u> definiert!</b></p> <p><b>(In der ICHD-3 dagegen präzierte 7-Tage-Frist)</b></p> | <p>Sekundäre Kopfschmerzen</p> <p>Kopfschmerz zurückzuführen auf eine Verletzung oder Trauma des Kopfes und oder der HWS 5.</p> <p>Anhaltender Kopfschmerz zurückzuführen auf eine traumatische Verletzung des Kopfes 5.2</p> <p><b>Anhaltender Kopfschmerz zurückzuführen auf eine leichte («leicht», da GCS 15) traumatische Verletzung des Kopfes 5.2.2</b></p> |

|                                       |   |  |
|---------------------------------------|---|--|
| <p><b>Migräne ohne Aura G43.0</b></p> | <p>Headache disorders Kapitel 8</p> <p>Migraine 8A80</p> <p><b>Migraine without aura 8A80.0</b></p> <p>Dr. med. Marc Oliver Koch,<br/>Neurologie Toggenburg AG, Wattwil</p> | <p>Primäre Kopfschmerzen</p> <p>Migräne 1.</p> <p><b>Migräne ohne Aura 1.1</b></p> |
|---------------------------------------|---|--|

**Vielen Dank  
für Ihre Mitarbeit!**